

# KEP series

KEP series \_ NO.4

## EPDM (ENB Type) – Oil Extended

품명	Mooney Viscosity (ML1+8,125 °C) (2)	ENB Content (wt.%) (1)	Ethylene Content (wt.%) (1)	Extender Oil (phr)	Product Form (3)	Features	Applications
KEP960N(F)	49	5.7	70	50	B, FB	Non-aromatic paraffinic oil, high mooney viscosity & high ethylene content, high filler loading & good physical properties	Radiator hose, window seals, extruded goods in general, automobile parts, moldings, washing machine gasket
KEP980N	58	4.5	70.5	75	B	Non-aromatic paraffinic oil, high mooney viscosity & high ethylene content, high filler loading, good physical Properties	Window seals, moldings in general, shock absorbing rubber(muffler hanger/engine mount), washing machine gasket, TPV
KEP980NP	53	4.5	70.5	75	P	High molecular mass, high ethylene product with excellent high charging and mechanical properties. Especially, it consists non-aromatic paraffinic oil as a new resource, making it suitable for low hardness products to provide excellent UV stability, when mixed with colors. Pellet type which offers excellent processability when applied to TPV	Automobile parts and extrusion products, vibration proof rubber and washer gaskets
KEP4640E	47	4.5	64	75	B	Non-aromatic paraffinic oil for low hardness products & high mooney viscosity and medium Ethylene contents EPDM & good physical and low temperature properties & excellent ozone resistance	Automotive parts, shock absorbing rubber (muffler hanger/engine Mount), TPV
KEP4640EP	44	4.5	64	75	P	High molecular mass, medium ethylene product with excellent low temperature characteristics and mechanical property. Especially, it consists non-aromatic paraffinic oil as a new resource, making it suitable for low hardness products to provide excellent UV stability, when mixed with colors. Pellet type which offers excellent processability when applied to TPV	Automotive parts, shock absorbing rubber (muffler hanger/engine Mount), TPV
KEP901N	50	4.8	70	100	B	High mooney viscosity & 100phr Non-aromatic paraffinic oil extended, suitable for low hardness compound & TPV parts	Molding in general, low hardness compounds, damping parts, TPV
KEP902N	52	4.5	66.5	100	B	High mooney viscosity & 100phr Non-aromatic paraffinic oil extended, suitable for low hardness compound & TPV parts	Molding in general, low hardness compounds, damping parts, TPV
KEP902NP	50	4.5	66.5	100	P	Oil 100phr extended product suitable for the process to mix low hardness materials. It can support high charging and provide excellent mechanical properties. Especially, it consists non-aromatic paraffinic oil as a new resource, making it suitable for low hardness products to provide excellent UV stability, when mixed with colors. Pellet type which offers excellent processability when applied to TPV	Automobile molding, low hardness mixture, washer gaskets

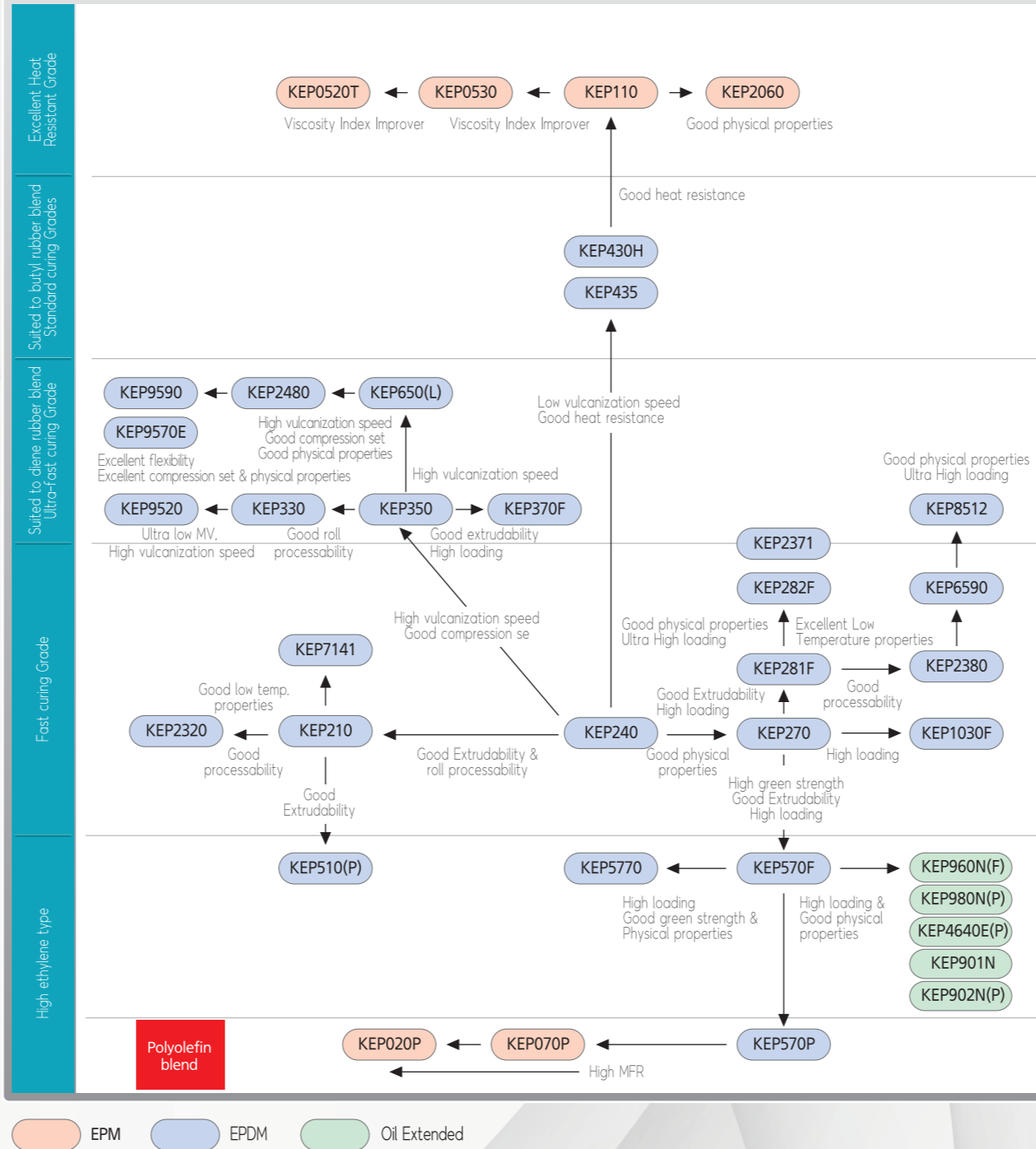
(1) Value of base polymer  
 (2) Mooney Viscosity : Massed Value  
 (3) Product Form : B = Dense Bale, FB = Friable Bale

## MAH-grafted-EP(D)M

Type	Melt Index (2.16kg / 230 °C)	Yellowness	Product Form	Features	Applications
KEPA1130	3	14	P	Ethylene-propylene copolymers/polypropylene blend grafted with maleic anhydride. As polymer modifiers, KEPA 1130 can function as coupling agent, compatibilizers and impact modifier in the polar polymer. * Impact modification : polyamides, polyesters etc. * Compatibilizer : polyamide/polyethylene, polyamide/polypropylene etc. * Coupling agent : polyethylene/CaCO3, polypropylene/glass etc.	Ski surf bindings, Automotive wheelcap, Oil separator, Helmet etc.
KEPA1150	2	11	P	Polyolefin elastomer grafted with maleic anhydride. As polymer modifiers, KEPA 1150 can function as coupling agent, compatibilizers and impact modifier in the polar polymer. * Impact modification : polyamides, polyesters etc. * Compatibilizer : polyamide/polyethylene, Polyamide/polypropylene etc. * Coupling agent : polyethylene/CaCO3, polypropylene/glass etc.	

(1) Product form : P = Pellet  
 \* These tables are for reference only, Exact specification are available on separate product datasheets.

# Grade Selection Map



# KEP series



**Solution Partner**  
 Creating Our Common Future  
 With Value Beyond Chemistry

**KUMHO POLYCHEM**

# KEP<sup>®</sup> series

KEP series \_ NO.1

## EPM

Type	Mooney Viscosity (ML1+4, 100 °C)	ENB Content (Wt.%)	Ethylene Content (Wt.%)	Extender Oil (Phr)	Product Form (1)	Features	Applications
KEP020P	25	-	71	-	P	Low mooney viscosity & high MFR & high processability, excellent low temperature flexibility in the modification of polyolefin thermoplastics(PP, PE) Blend with PE : films	Blend with PP : TPO, sponge, films, sheets, automotive applications (bumper, spoiler, instrument panel) Blend with PE : films
KEP070P	69	-	70.5	-	P	Medium mooney viscosity, high impact resistance in the modification of polyolefine thermoplastics(PP, PE)	Blend with PP : Injection moldings(bumper etc.), films, sheets and polyolefin modifiers
KEPII0	40	-	52	-	B	Bale product with an amorphous structure, easy processing and excellent heat resistance properties	Blend with PP : Injection moldings(bumper etc.), films, sheets and polyolefin modifiers
KEP0520T	10	-	50	-	B	Low molecular mass and narrow molecular mass distribution, and non crystalline structure suitable for lubricant viscosity index improvement material.	Lubricant oil viscosity index improver (SSI 25%(ASTM D6278))
KEP0530	30	-	50	-	B	Low molecular mass and narrow molecular mass distribution, and non crystalline structure suitable for lubricant viscosity index improvement material.	Lubricant oil viscosity index improver (SSI 35%(ASTM D6278))
KEP2060	65 (2)	-	53.5	-	B	Medium mooney viscosity EPM grade with broad molecular weight distribution & good processability and excellent heat resistance	Heat resistant belt, cables, TPO

(1) Product Form : P = Pellet, B = Dense Bale  
(2) ML1+4, 125 °C

## EPDM (ENB Type) – Low Diene

Type	Mooney Viscosity (ML1+4, 100 °C)	ENB Content (Wt.%)	Ethylene Content (Wt.%)	Extender Oil (Phr)	Product Form (1)	Features	Applications
KEP435	33	2.3	57	-	B	Low mooney viscosity & slow vulcanization speed, excellent heat & ozone resistance, optimum scorch safety in blending with IIR	Automobile tire tubes, waterproof sheet, heat resistant belt
KEP430H	43	1.6	57	-	B		

(1) Product Form : B = Dense Bale

# KEP<sup>®</sup> series

KEP series \_ NO.2

## EPDM (ENB Type) – Medium Diene

Type	Mooney Viscosity (ML1+4, 125 °C) (2)	ENB Content (Wt.%)	Ethylene Content (Wt.%)	Extender Oil (Phr)	Product Form (3)	Features	Applications
KEP210	23	5.7	64.5	-	B	Low mooney viscosity & high vulcanization speed, good processability & high extrusion Speed	Wires, cables, automobile parts, window seals, sponge
KEP510	23	5.7	71	-	B	Good roll processability, excellent extrudability, fast vulcanization speed, high hardness	Wires, cables, various types of extruded parts, glass run for high hardness
KEP510P	20	5.7	71	-	P	Suitable for the high hardness product. It can provide high flow speed and excellent roll workability and extrusion abilities.	Wire sheath, insulation cables, automobile parts and extrusion products
KEP2320	25	4.7	57.5	-	B	Excellent roll processability, good processing even without oil, excellent extrusion, good electrical property	Electrical insulation, brake parts, gaskets, corner molding, molded sponge
KEP714I	27	4.5	51.5	-	B	Low mooney viscosity & excellent roll processability, excellent low temperature properties, medium vulcanization speed	Sponges, wires, cables, electrical parts, gaskets, industrial parts, oil free compound(brake hose)
KEP240	42	4.5	56.5	-	B	Medium vulcanization speed & good processability, good balance of vulcanization speed and physical properties	Various types of industrial parts, automobile parts and injection molding goods etc.
KEP570P	53	4.5	70	-	P	High impact resistance in the modification of polyolefin thermoplastics(PP,PE)	Blend with PP : injection moldings(bumper etc.), films, sheets and polyolefin modifiers, various types of automobile parts
KEP570F	59	4.5	70	-	FB	High mooney viscosity & high ethylene content, high green strength & excellent extrudability, medium vulcanization speed & high filler loading	Automobile & Industrial hose, washing machine hose, window seals, various types of automobile Parts
KEP5770	73	5.0	74	-	FB	High mooney viscosity & high ethylene content, Excellent green strength & excellent extrudability, medium vulcanization speed & high filler loading	Automobile & Industrial hose, washing machine hose, window seals, various types of automobile Parts
KEP270	71	4.5	56.5	-	B	High mooney viscosity & medium vulcanization speed, high filler loading	Heat resistant hose, washing machine hose, window seals, various types of automobile Parts
KEP2380	82 (1)	5.7	55.5	-	SFB	Tailored molecular weight distribution grade, good processability, fast extrusion, fast vulcanization speed, quality consistency, productivity improvement	60-70 shore a dense body sealings, radiator hose, molded goods, gaskets
KEP6590	90 (1)	6.5	53	-	SFB	High mooney viscosity EPDM grade with low Ethylene contents and broad molecular weight distribution & good processability, physical properties, compression set and low temperature properties	60-70 Shore A Dense Body Sealings, Radiator & Automotive Hose, Building Profile
KEP281F	82 (1)	5.7	67	-	FB	High mooney viscosity & high vulcanization speed, high filler loading & excellent extrusion property, good collapse resistance	Weatherstrip solid, window seals, various types of automobile parts, heat resistant hose
KEP282F	90 (1)	5.7	73	-	FB	High mooney viscosity & High ethylene content, high vulcanization speed, high filler loading & excellent extrusion property, good collapse Resistance	Weatherstrip solid, window seals, various types of automobile parts, heat resistant hose
KEPI030F	86 (1)	4.5	61.5	-	FB	High mooney Viscosity, high filler loading & good dimensional stability, balanced low temperature flexibility, good physical properties	Weatherstrip solid & extruded profiles, radiator hose, heat resistance hose
KEP237I	115 (1)	7.0	70	-	B	High mooney Viscosity, high vulcanization speed, high filler loading & excellent extrusion properties, good collapse resistance	Weatherstrip solid, window seals, various types of automobile parts, heat resistance hose

(1) ML1+8, 125 °C  
(2) Mooney Viscosity : Massed Value  
(3) Product Form : B = Dense Bale, FB = Friable Bale, P = Pellet, SFB = Semi-Friable Bale

# KEP<sup>®</sup> series

KEP series \_ NO.3

## EPDM (ENB Type) – High Diene

Type	Mooney Viscosity (ML1+4, 125 °C) (2)	ENB Content (Wt.%)	Ethylene Content (Wt.%)	Extender Oil (Phr)	Product Form (3)	Features	Applications
KEP330	28	7.9	56.5	-	B	Low mooney viscosity & excellent processability, high vulcanization speed, blend with diene rubber	Tire coverstrip, white sidewall, window seals, gaskets, packings, sponges
KEP650L	41	8.7	59	-	B	Medium mooney viscosity & excellent processability, high vulcanization speed	Sponges, window seals, industrial parts
KEP650	49	8.7	59	-	B	Medium mooney viscosity & excellent processability, high vulcanization speed	Sponges, window seals, industrial parts
KEP350	56	7.9	57	-	B	High mooney viscosity & excellent processability, high vulcanization speed, blend with diene rubber	Tire coverstrip, white sidewall, window seals, gaskets, packings, sponges
KEP370F	69	8.1	59	-	FB	High mooney viscosity & excellent processability very high ENB content & high vulcanization speed, suitable for blending with diene Rubbers	Weather strip body/door seal, gasket, packings, general sponges etc.
KEP2480	81 (1)	8.9	57.5	-	SFB	Tailored molecular weight distribution grade, good processability, fast extrusion, fast vulcanization speed, quality consistency, productivity improvement, good compression set	Sponge body sealings, window seals
KEP9520	15	9.0	56.5	-	B	Ultra low molecular mass to provide very high flow speed. For low charging mixing, it can provide great flowability and processability	Gasket, O-ring, automobile parts, industrial parts
KEP9590	95 (1)	10.0	52.5	-	SFB	High mooney viscosity & low ethylene content, good processability, fast extrusion, ultra-high vulcanization speed, quality consistency, productivity improvement, excellent sponge compression set & softness	Sponge body sealings, window seals
KEP9570E	70 (1)	10.0	55	20	SFB	Non-aromatic paraffinic oil & tailored molecular weight distribution & good processability, compression set and collapse resistance & excellent extruding surface and softness	Sponge Body Sealings, automotive parts
KEP8512	88 (4)	8.0	55	-	B	High mooney viscosity EPDM with high ENB and Ethylene contents & high filler loading & good physical properties, compression set and low temperature properties & excellent processability with broad molecular weight distribution	60-70 Shore A Dense Body Sealings, Radiator & Automotive Hose, Building Profile

(1) ML1+8, 125 °C  
(2) Mooney Viscosity : Massed Value  
(3) Product Form : B = Dense Bale , FB = Friable Bale, SFB = Semi-Friable Bale  
(4) ML1+8, 150 °C